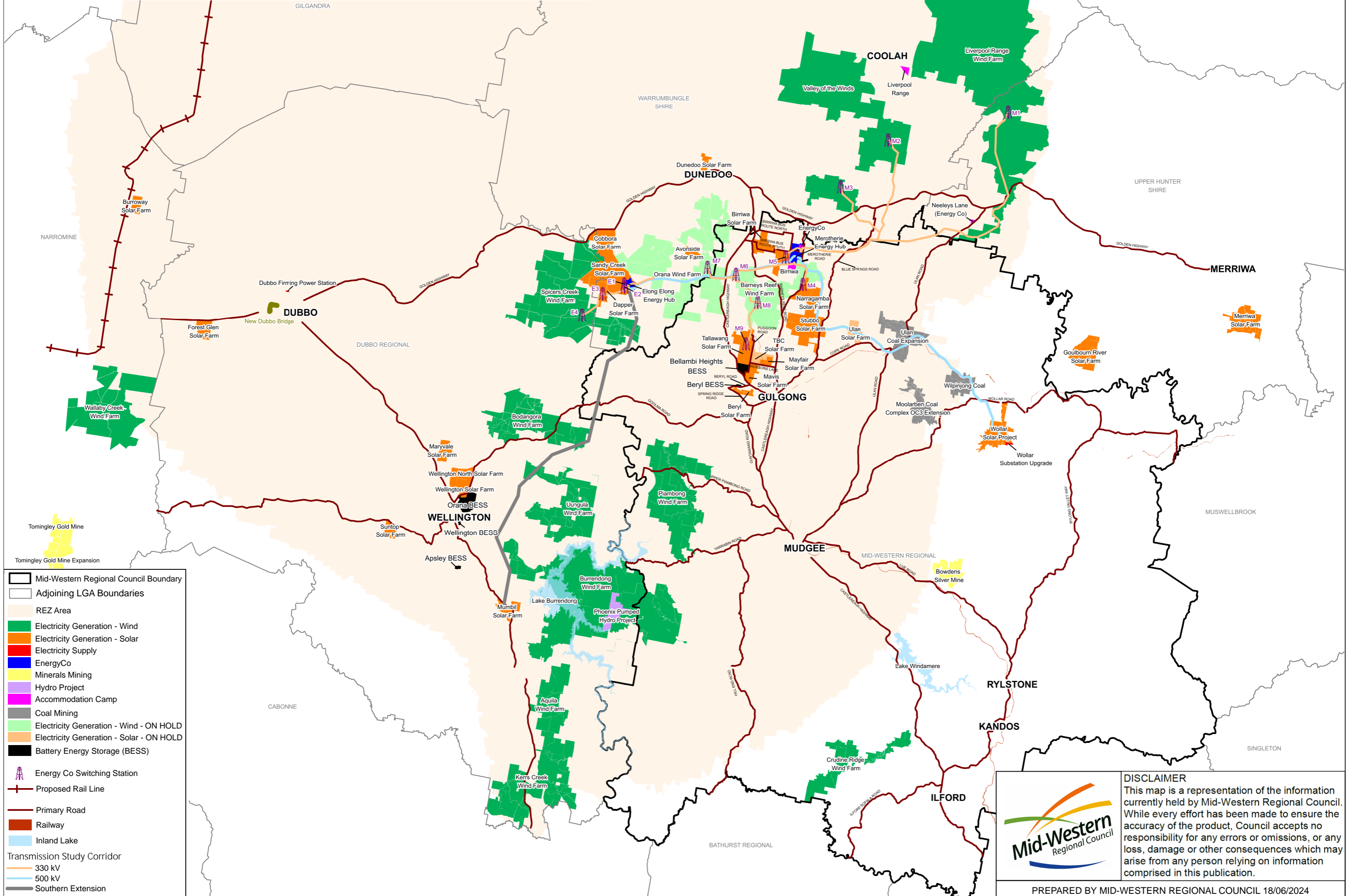


# Proposed State Significant Development



**Legend**

- Mid-Western Regional Council Boundary
- Adjoining LGA Boundaries
- REZ Area
- Electricity Generation - Wind
- Electricity Generation - Solar
- Electricity Supply
- EnergyCo
- Minerals Mining
- Hydro Project
- Accommodation Camp
- Coal Mining
- Electricity Generation - Wind - ON HOLD
- Electricity Generation - Solar - ON HOLD
- Battery Energy Storage (BESS)
- Energy Co Switching Station
- Proposed Rail Line
- Primary Road
- Railway
- Inland Lake
- Transmission Study Corridor
  - 330 kV
  - 500 kV
  - Southern Extension

**Mid-Western Regional Council**

**DISCLAIMER**  
 This map is a representation of the information currently held by Mid-Western Regional Council. While every effort has been made to ensure the accuracy of the product, Council accepts no responsibility for any errors or omissions, or any loss, damage or other consequences which may arise from any person relying on information comprised in this publication.

PREPARED BY MID-WESTERN REGIONAL COUNCIL 18/06/2024